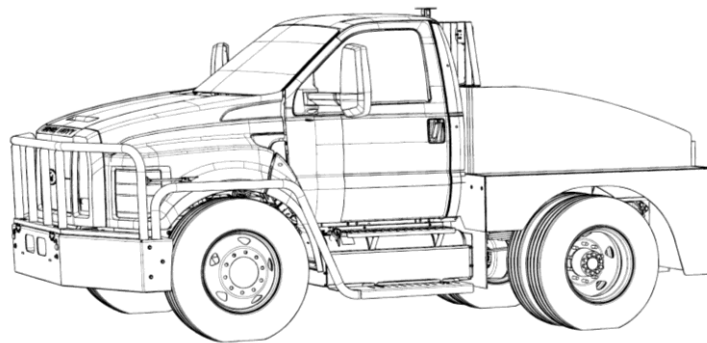




# OPERATION & SERVICE MANUAL



**Model: EB2-10G  
Bobtail Tractor**

12/2025 – Rev. 03  
Serial Numbers: 10B030 and later

**For Spare Parts, Operations & Service Manuals or Service Needs  
Scan the QR code or visit [Tronair.com/aftermarket](http://Tronair.com/aftermarket)**



The Tronair Group of Companies: Tronair | EBIS | Columbus Jack | Eagle | Malabar International

**Eagle Tugs**  
1 Air Cargo Pkwy East  
Swanton, OH 43558

Phone: (419) 866-6301 | 800-426-6301  
Web: [www.tronair.com](http://www.tronair.com)  
Email: [sales@tronair.com](mailto:sales@tronair.com)

REVISION	DATE	TEXT AFFECTED
01	01/2024	Original release
02	02/2024	Added 4.0 Operation section
03	12/2025	Modified 9.2 Eagle Warranty



**TABLE OF CONTENTS**

**PAGE**

<b>1.0</b>	<b>PRODUCT INFORMATION .....</b>	<b>1</b>
1.1	DESCRIPTION.....	1
1.2	MODEL & SERIAL NUMBER.....	1
1.3	MANUFACTURER.....	1
<b>2.0</b>	<b>SAFETY INFORMATION.....</b>	<b>2</b>
2.1	USAGE AND SAFETY INFORMATION.....	2
2.2	IMPORTANT SAFETY NOTICE.....	2
2.3	GENERAL.....	2
<b>3.0</b>	<b>TRAINING.....</b>	<b>2</b>
3.1	TRAINING REQUIREMENTS.....	2
3.2	TRAINING PROGRAM.....	2
3.3	OPERATOR TRAINING.....	2
<b>4.0</b>	<b>OPERATION.....</b>	<b>3</b>
4.1	OPERATOR REQUIREMENTS.....	3
4.2	OPERATOR WORKSTATION.....	3
4.3	PRE-OPERATION CHECKLIST.....	3
4.3.1	Daily Pre-Operation Checklist.....	3
4.3.2	Weekly Operation Checklist.....	4
4.4	STARTUP/SHUTDOWN AND SAFE TOWING.....	4
4.4.1	Starting The Unit:.....	4
4.4.2	Shutting Down The Unit:.....	4
4.4.3	Load Towing Safety.....	4
<b>5.0</b>	<b>MAINTENANCE.....</b>	<b>4</b>
<b>6.0</b>	<b>PROVISION OF SPARES.....</b>	<b>5</b>
6.1	SOURCE OF SPARE PARTS.....	5
6.2	RECOMMENDED SPARE PARTS LISTS.....	5
6.3	MODIFIED CHASSIS.....	6
6.4	REMAINING PARTS.....	16
<b>7.0</b>	<b>PROVISION OF SPARES.....</b>	<b>27</b>
7.1	SOURCE OF SPARE PARTS.....	27
<b>8.0</b>	<b>IN SERVICE SUPPORT.....</b>	<b>27</b>
8.1	TECHNICAL ASSISTANCE.....	27
<b>9.0</b>	<b>GUARANTEES/LIMITATION OF LIABILITY.....</b>	<b>27</b>
9.1	FORD WARRANTY.....	27
9.2	EAGLE WARRANTY.....	28



**Model: EB2-10G**  
**Serial Numbers: 10B030 and later**  
**Bobtail Tractor**

From everyone at Tronair, we would like to say thank you for purchasing an Eagle EB2 series tow tractor. We take a lot of pride in the quality of the products that we build, as well as, our continued customer service. Our goal is to build a long term relationship with our customers. We want you, the customer, to be 100% satisfied with your experience. To us, this means that your Eagle EB2 series tractor is functionally superior to any other products you have used. This also means that your Eagle product is continually supported in a professional, timely manner.

**1.0 PRODUCT INFORMATION**

**1.1 DESCRIPTION**

This manual is designed as a reference guide to make the reader more familiar with the Tronair-specific components of the Eagle EB2 series tow tractor models. This manual includes part numbers and descriptions to assist the reader in ordering component spare/service parts

Please check [www.eagletugs.com](http://www.eagletugs.com) periodically for updates to this manual, operations manual, and service bulletins that affect your tractor.

**1.2 MODEL & SERIAL NUMBER**

Reference nameplate on unit

**1.3 MANUFACTURER**

**Tronair / Eagle Tugs**  
1 Air Cargo Pkwy East  
Swanton, Ohio 43558 USA

Telephone: (419) 866-6301 or 800-426-6301  
Fax: 419) 867-0634  
E-mail: [sales@tronair.com](mailto:sales@tronair.com)  
Website: [www.tronair.com](http://www.tronair.com)

## 2.0 SAFETY INFORMATION

### 2.1 USAGE AND SAFETY INFORMATION

To ensure safe operations please read the following statements and understand their meaning. Also refer to your equipment manufacturer's manual for other important safety information. This manual contains safety precautions which are explained below. Please read carefully.



#### **WARNING!**

Warning is used to indicate the presence of a hazard that can cause **severe personal injury, death, and/or substantial property damage** if the Warning Notice is ignored.



#### **CAUTION!**

Caution is used to indicate the presence of a hazard, which will or can cause **minor personal injury or property damage** if the Caution Notice is ignored.

### 2.2 IMPORTANT SAFETY NOTICE

Appropriate service methods and proper repair procedures are essential for the safe and reliable operation of all industrial equipment as well as the personal safety of the individual performing the work. This service manual provides general directions for accomplishing service and repair work with tested and effective techniques. Following them will help assure reliability.

There are numerous variations in procedures, techniques, tools, and parts for servicing equipment, as well as in the skill of the individual doing the work. This manual cannot anticipate all such variations and provide advice or cautions as to each. Accordingly, anyone who departs from the instructions provided in this manual must first establish that he compromises his/her personal safety and/or the equipment integrity by his/her choice of methods, tools or parts.

### 2.3 GENERAL

The following list contains some general warnings that you should follow when you work on equipment:

- Always wear safety glasses for eye protection.
- Use safety stands whenever a procedure requires you to be under the equipment.
- Be sure that the ignition switch and battery is disconnected unless otherwise required by the procedure.
- Set the parking brake when working on the equipment. Place wheel chocks on the tires to provide further restraint from inadvertent equipment movement.
- Keep yourself and your clothing away from moving parts when the motor is running.
- Do not smoke while working on the equipment.
- To avoid injury, always remove rings, watches, loose hanging jewelry, and loose clothing before beginning to work on the equipment. Tie long hair securely behind the head.

For more information regarding safety please refer to the operations manual provided with your tug. This manual can also be found on the Eagle Tugs website at [www.eagletugs.com](http://www.eagletugs.com).

## 3.0 TRAINING

### 3.1 TRAINING REQUIREMENTS

The employer of the operator is responsible for providing a training program sufficient for the safe operation of the unit.

### 3.2 TRAINING PROGRAM

The employer provided operator training program should cover safety procedures concerning use of the unit in and around the intended aircraft at the intended aircraft servicing location.

### 3.3 OPERATOR TRAINING

The operator training should provide the required training for safe operation of the unit.

**NOTE: Maintenance and Trouble Shooting are to be performed by a skilled and trained technician.**



**4.0 OPERATION**

**4.1 OPERATOR REQUIREMENTS**

The Bobtail series tow tractor is a piece of industrial equipment and has inherent safety risks. As such, the operator of the tow tractor is expected to have a fork truck or similar license, or be otherwise trained in the usage of material handling equipment.

The operator should read this manual in its entirety before operating the tow tractor.

The operator should be familiar with all aspects of the tow tractor before operating it.

**4.2 OPERATOR WORKSTATION**

Your Bobtail series tow tractor features an ergonomically designed operator's cabin based on a Ford chassis. This is the only operator workstation on the tractor. Do not sit on or stand on the tractor outside of the cabin area during tractor movement.

The operator and any passengers should be seated with the seatbelt secured when moving or operating the tractor.

Always bring the tractor to a complete stop and place the tractor in Park before exiting the tractor.

**4.3 PRE-OPERATION CHECKLIST**

The following inspections should be conducted as stated below. Additional inspections may be required due to unusual operating conditions.



**WARNING!**

**Any problems noted during inspection should be corrected as soon as possible. Failure to promptly attend to problems could compromise safety and/or the tractor's performance. Do not attempt to make repairs. Contact a qualified mechanic.**

**4.3.1 Daily Pre-Operation Checklist**

Daily Pre-Operation Checklist	Satisfactory	Service Required	Not Applicable
<b>Walk-Around Inspection</b>			
Verify no evidence of leaks under and around the tractor			
Verify fuel cap securely in place			
Visually verify tires are fully inflated			
Verify rims and tires free from damage including tire tread			
Verify tire tread is free from debris			
Verify lights, mirrors, and reflectors are clean			
<b>Operational Checks (tractor engine running)</b>			
Verify that the dash LED indicators are free of errors and warnings			
Verify that battery voltage is above 12V			
Verify that horn is operational			
Verify that lights, flashers, and beacon work properly			
<b>Cab Inspection</b>			
Verify windows clean			
Verify windows free of cracks and chips			
Verify windshield wipers operate properly			
Verify heater and fans operate properly			



4.3.2 Weekly Operation Checklist

Weekly Pre-Operation Checklist	Satisfactory	Service Required	Not Applicable
Walk-Around Inspection			
Verify tire inflation pressure (per manufacturer label in door frame)			
Engine Compartment Inspection			
Check engine oil level (top off in necessary)			
Check engine coolant level (top off if necessary)			

4.4 STARTUP/SHUTDOWN AND SAFE TOWING

4.4.1 Starting The Unit:

1. With feet firmly on the floor mat, adjust the seat to a comfortable position.
2. Sit in the operator seat and buckle the seat belt.
3. Verify that the gear selector is in the park position.
4. Start the engine with the ignition switch.
5. Select the desired transmission gear (D or R)
6. While holding the service brake pedal, release the parking brake.
7. Verify that the intended path of the tractor is clear of obstructions and personnel and then proceed with driving.


4.4.2 Shutting Down The Unit:

1. Bring the tractor to a complete stop with the service brake.
2. Put the tractor in park using the shift lever.
3. Turn the tractor off by turning the ignition switch.

4.4.3 Load Towing Safety

If towing or pushing a load, check to see that:

1. The towed load is securely connected to the hitch of the tractor. Be sure hitch is locked/fastened into the closed position.
2. For maximum tractor and load control and stability, as well as towing power, be sure the towbar is parallel to the ground when connected to the tractor's hitch.
3. Ensure the towed load clears all obstacles when towing.

	<ul style="list-style-type: none"> <li>• The Tronair Bobtail is equipped with a speed limiting governor for operator safety.</li> <li>• It is the responsibility of the operator to always maintain a safe operating speed.</li> <li>• Driving speed should never exceed a safe operating speed considering the environment, weather, and towed load.</li> </ul>
---	--

5.0 MAINTENANCE

The Ford operator's manual should be the basis for all preventive maintenance scheduling. Note that one hour of operation should be considered equivalent to 25 miles per the Ford preventive maintenance schedule.



**6.0 PROVISION OF SPARES**

**6.1 SOURCE OF SPARE PARTS**

Spare parts may be obtained from the manufacturer:

**Tronair / Eagle Tugs**

1 Air Cargo Pkwy East  
Swanton, Ohio 43558 USA

Telephone: (419) 866-6301 or 800-426-6301

Fax: 419) 867-0634

E-mail: [parts@tronair.com](mailto:parts@tronair.com)

Website: [www.tronair.com](http://www.tronair.com)

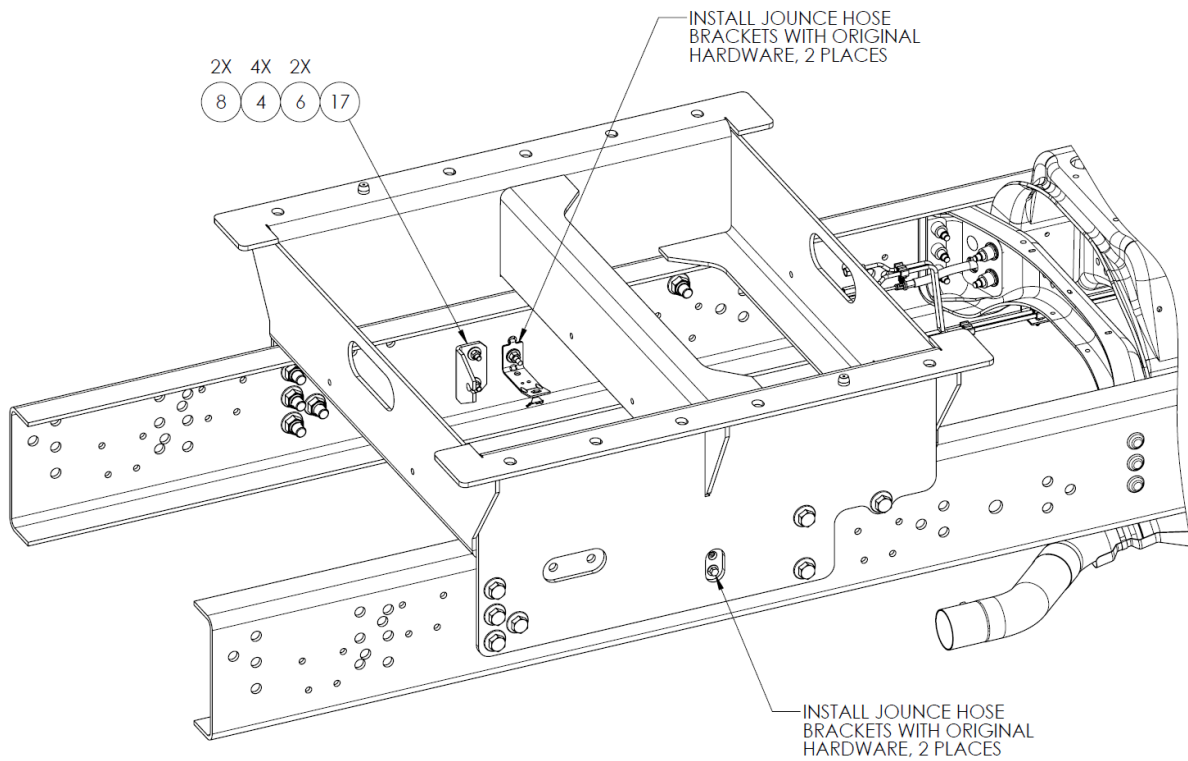
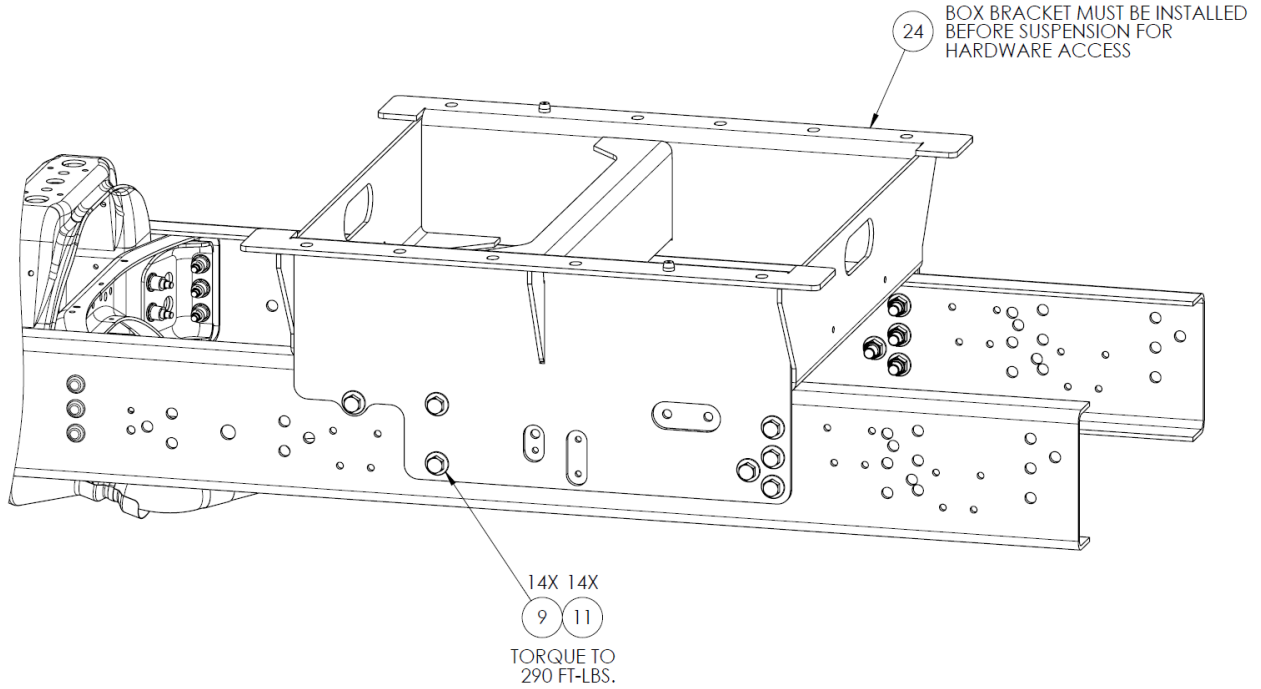
For Spare Parts, Operations & Service Manuals or Service Needs:  
Scan the QR code or visit [Tronair.com/aftermarket](http://Tronair.com/aftermarket)



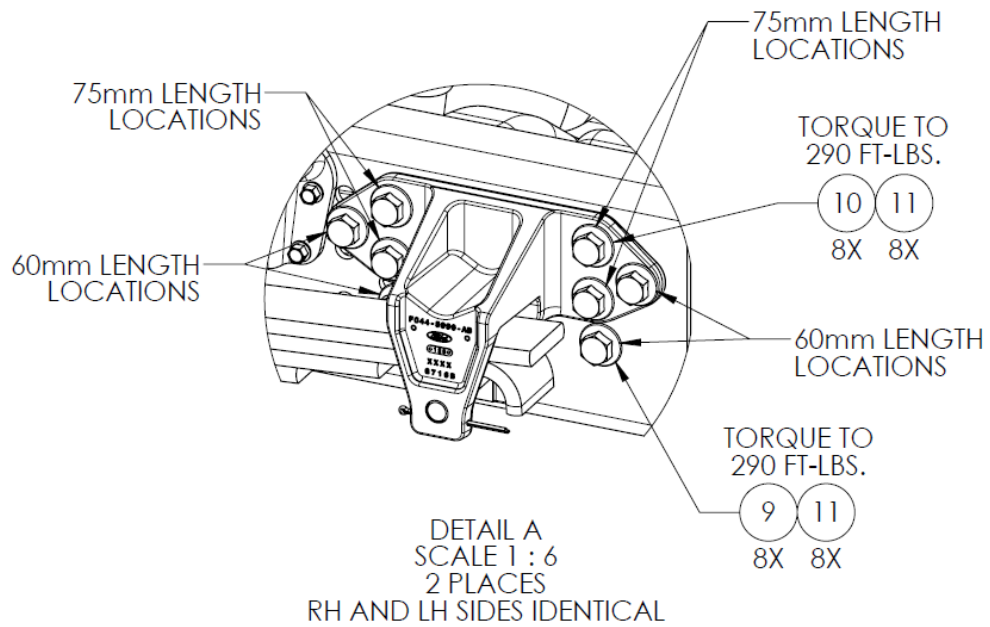
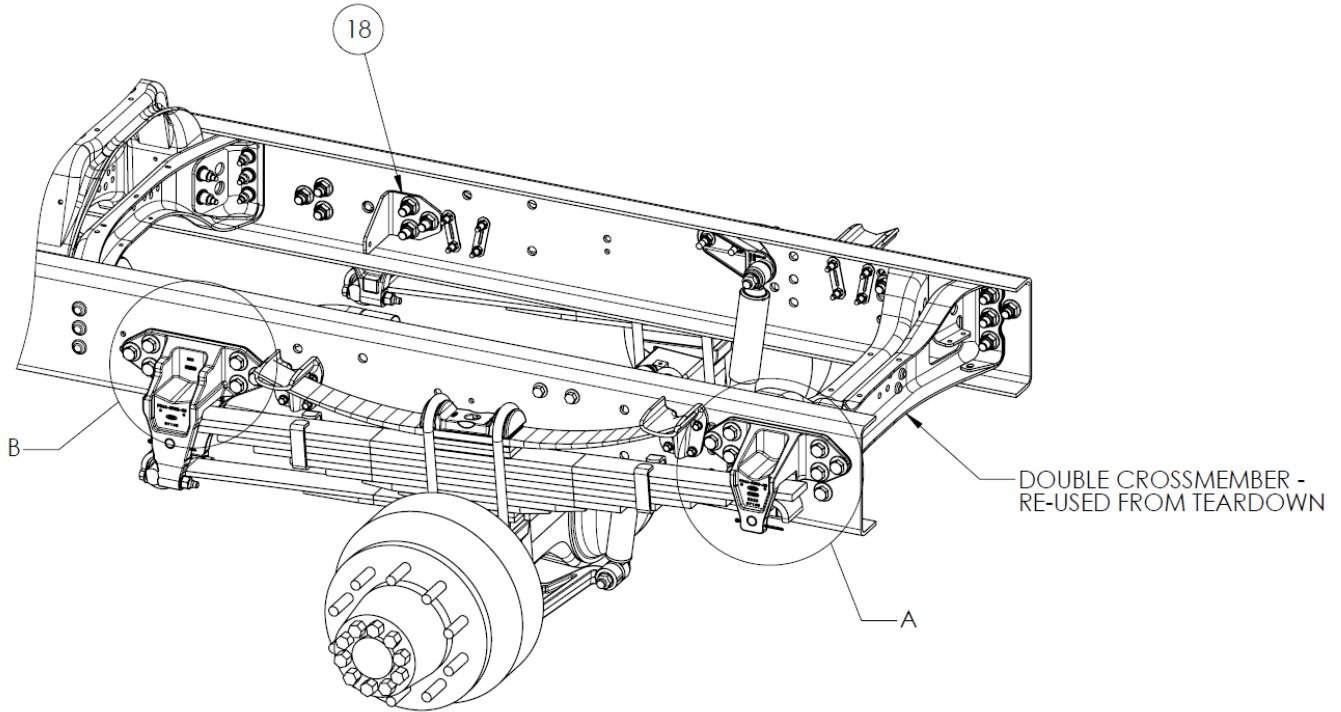
**6.2 RECOMMENDED SPARE PARTS LISTS**

Reference the following page(s) for Replacement Parts and Kits available.

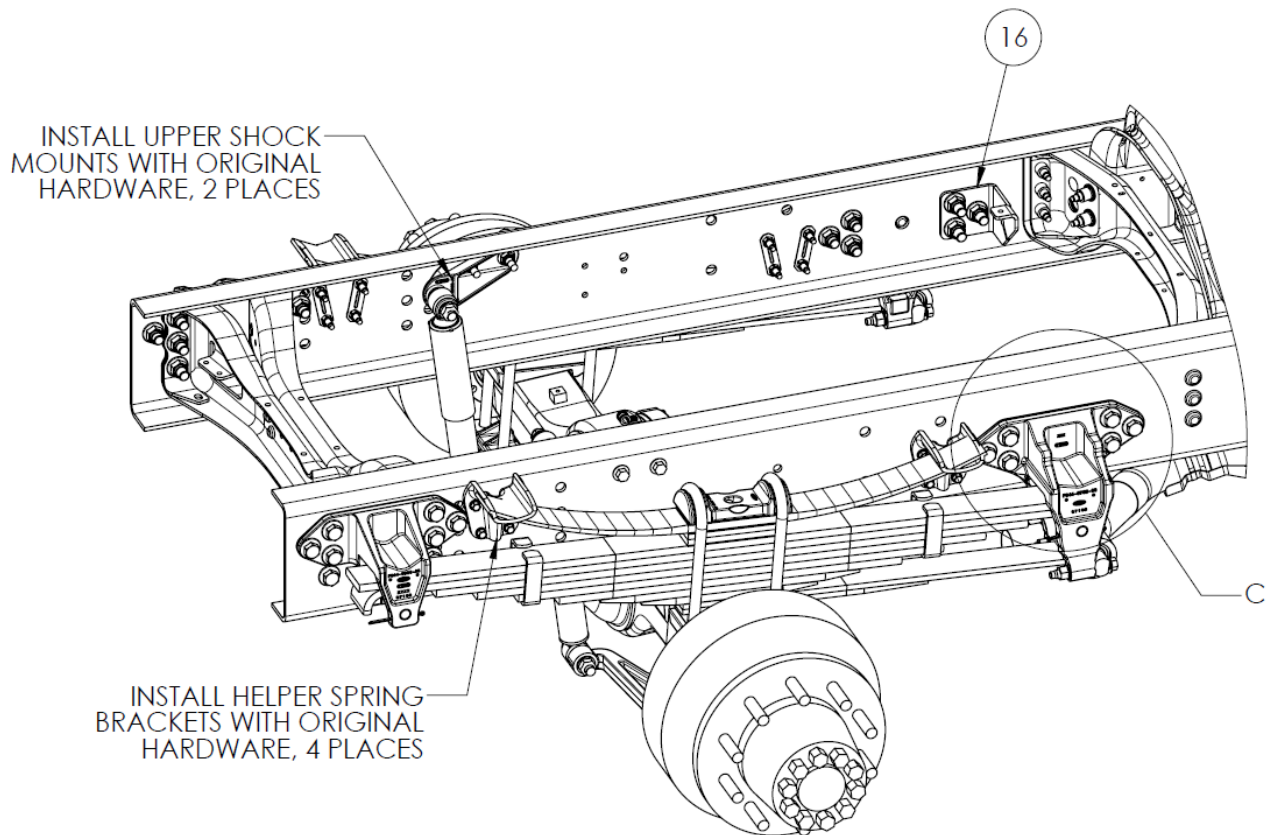
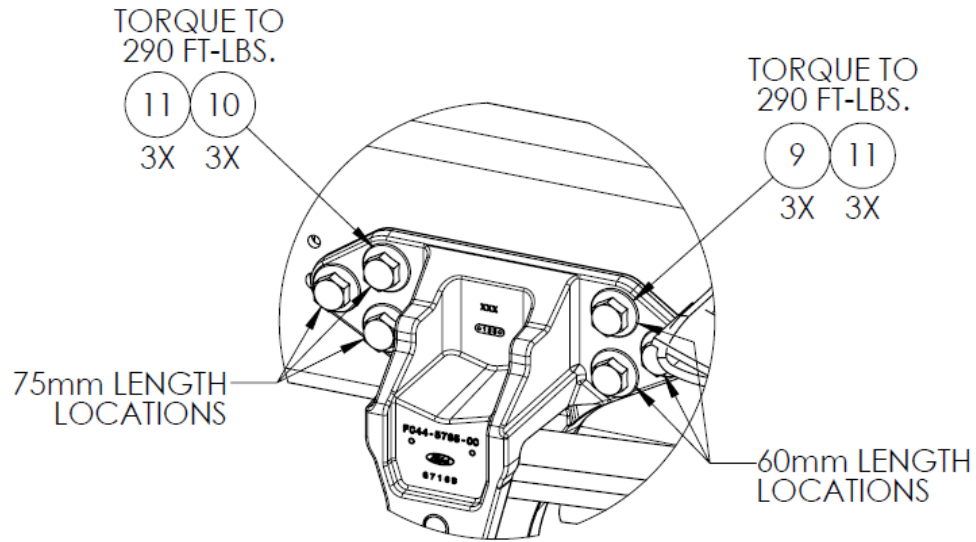
6.3 MODIFIED CHASSIS



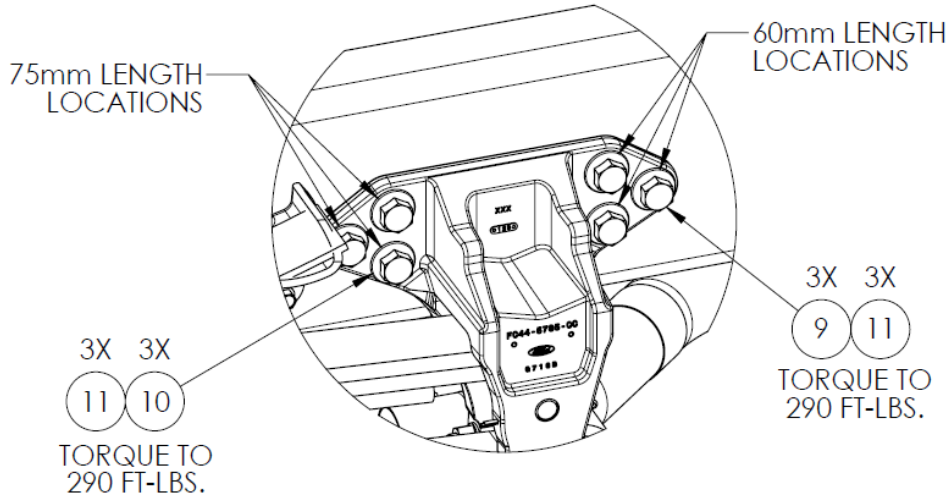
6.3 MODIFIED CHASSIS (continued)



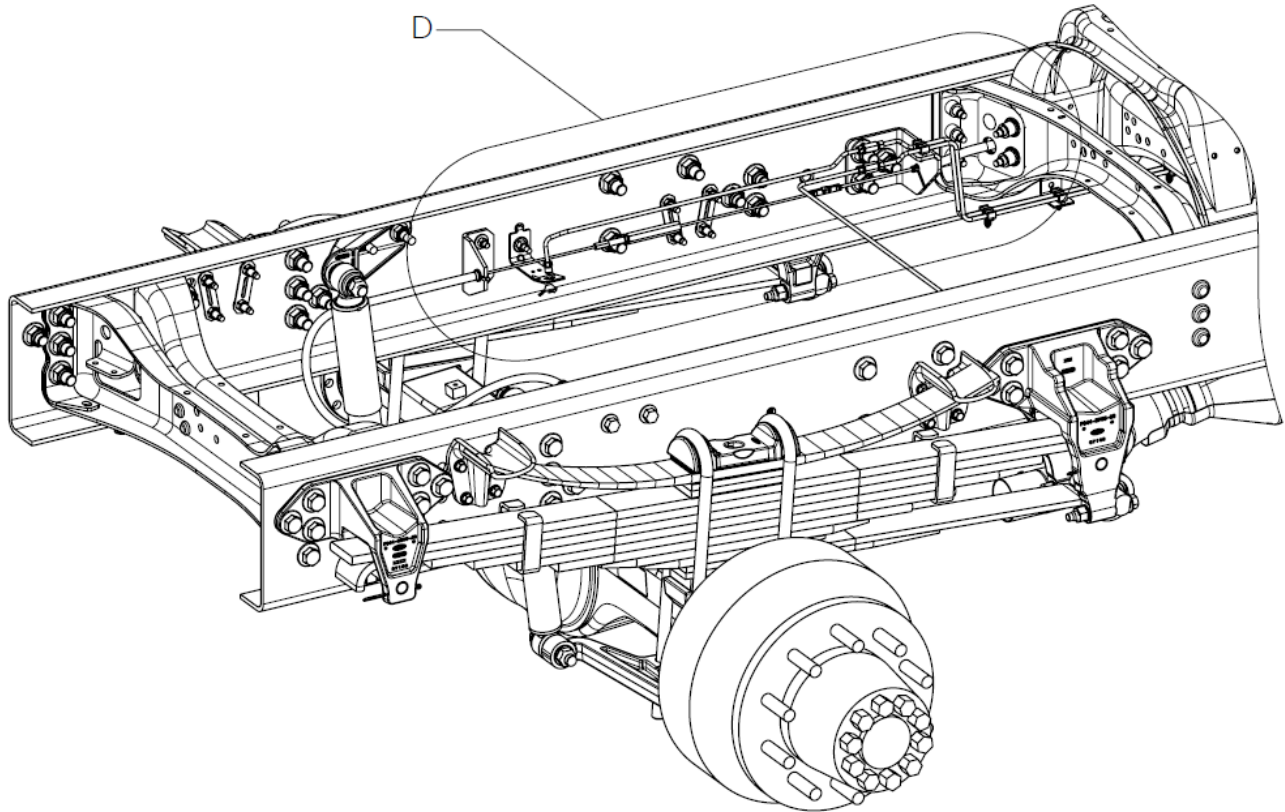
6.3 MODIFIED CHASSIS (continued)



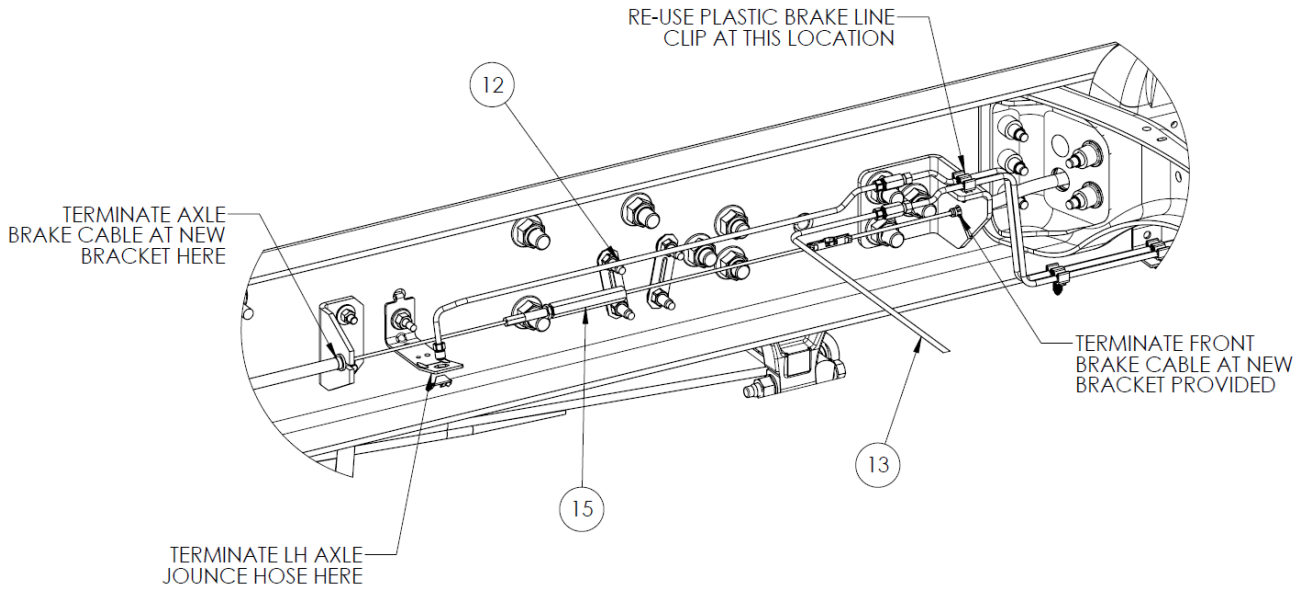
6.3 MODIFIED CHASSIS (continued)



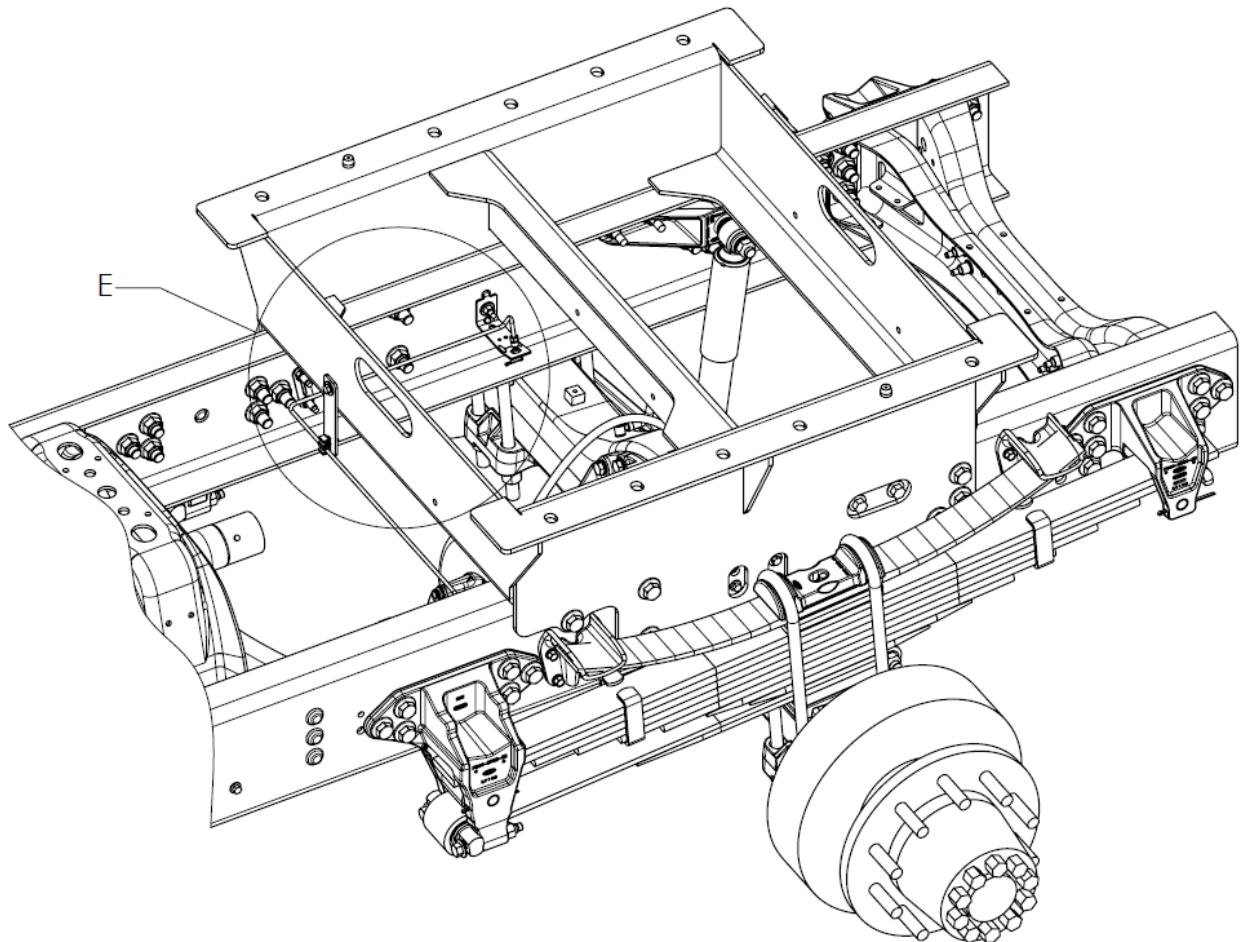
DETAIL C  
SCALE 1 : 6  
THIS LOCATION ONLY



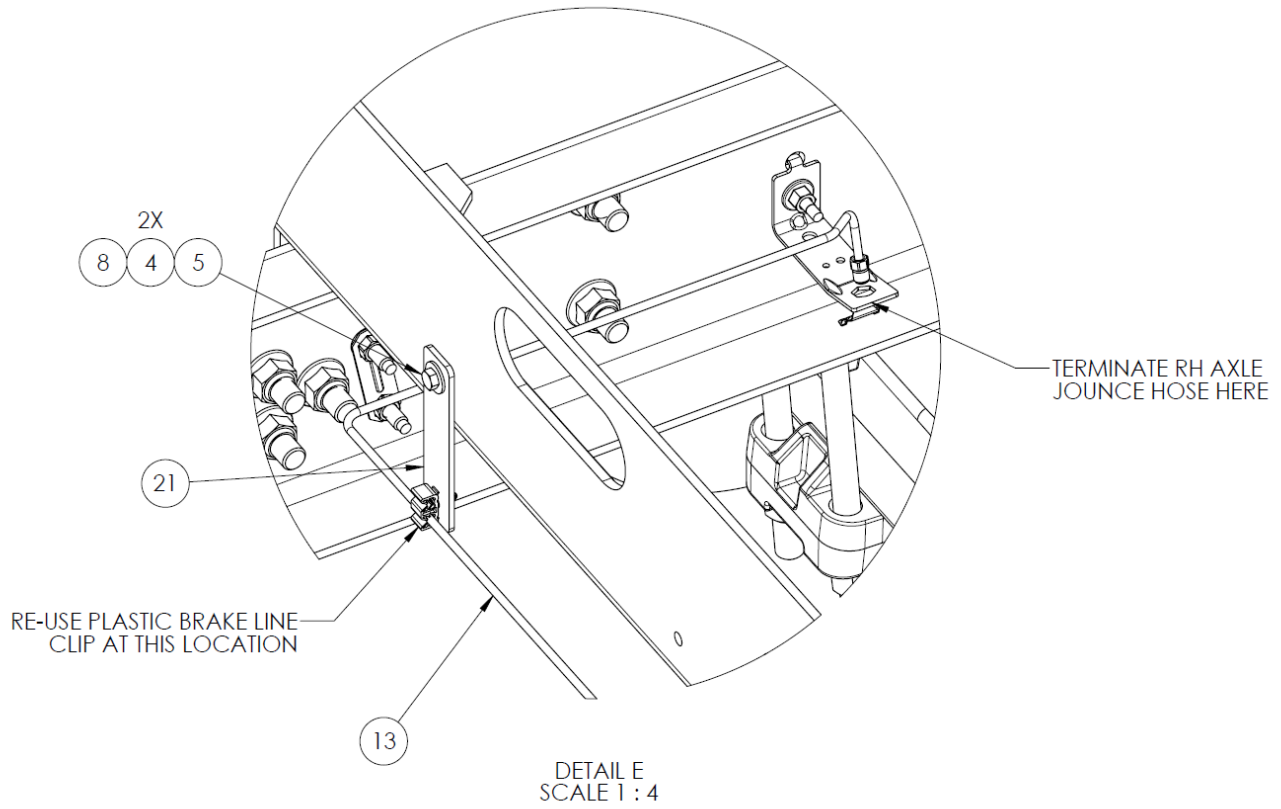
6.3 MODIFIED CHASSIS (continued)



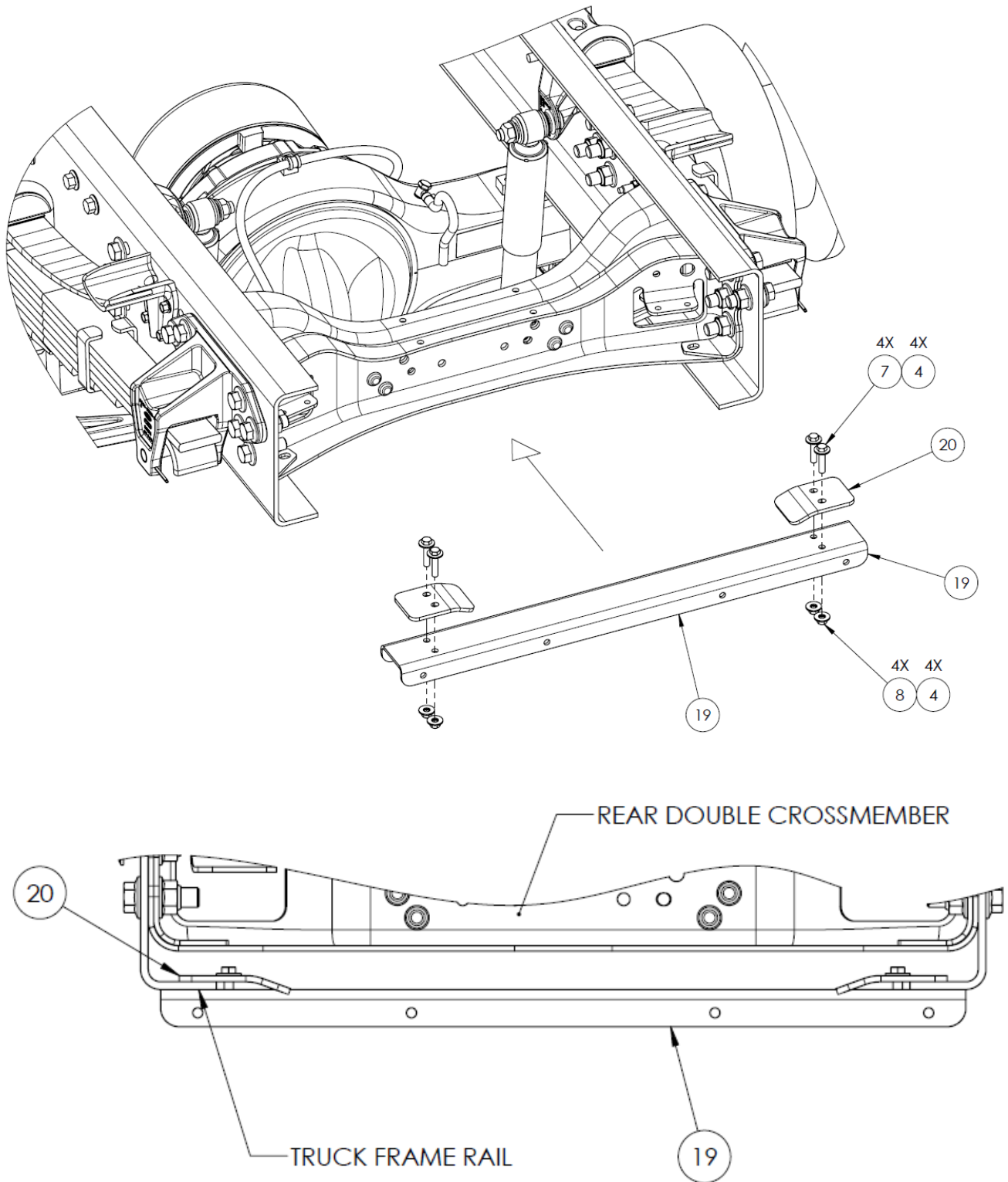
DETAIL D  
 SCALE 1 : 6



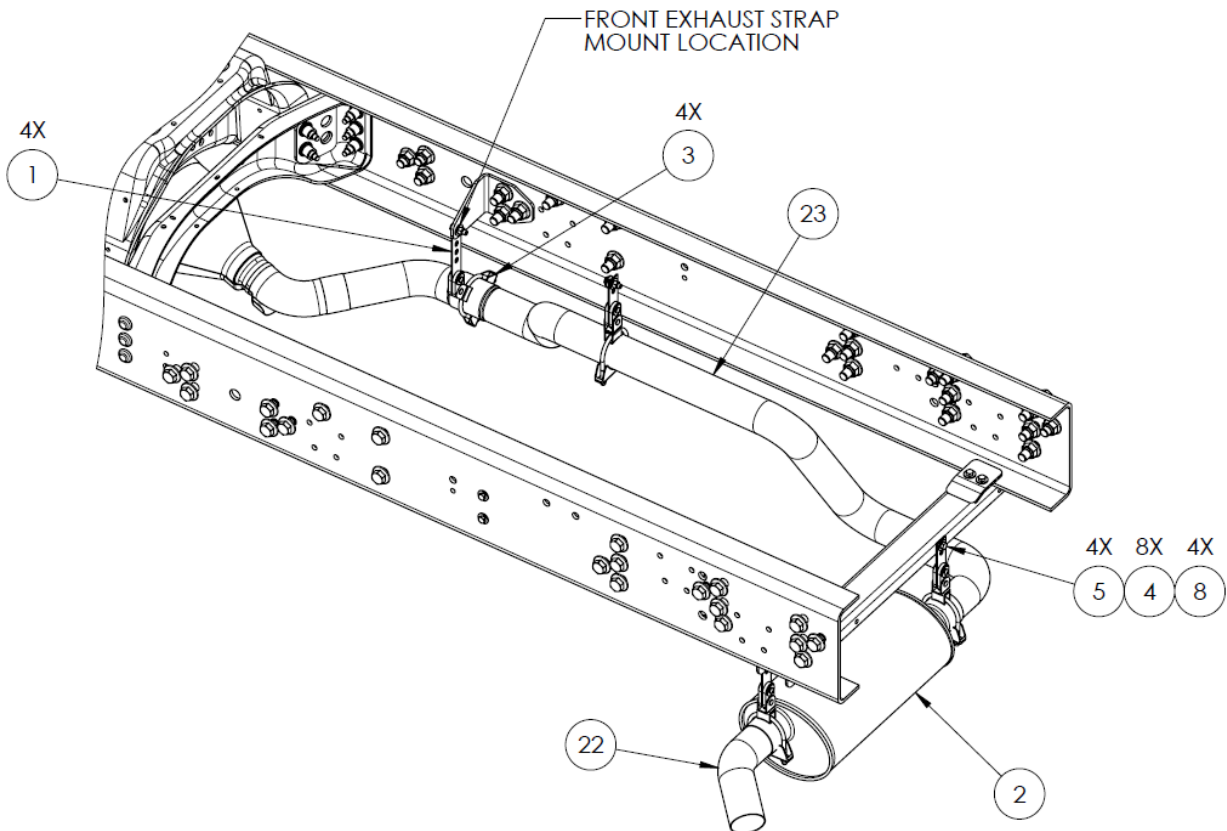
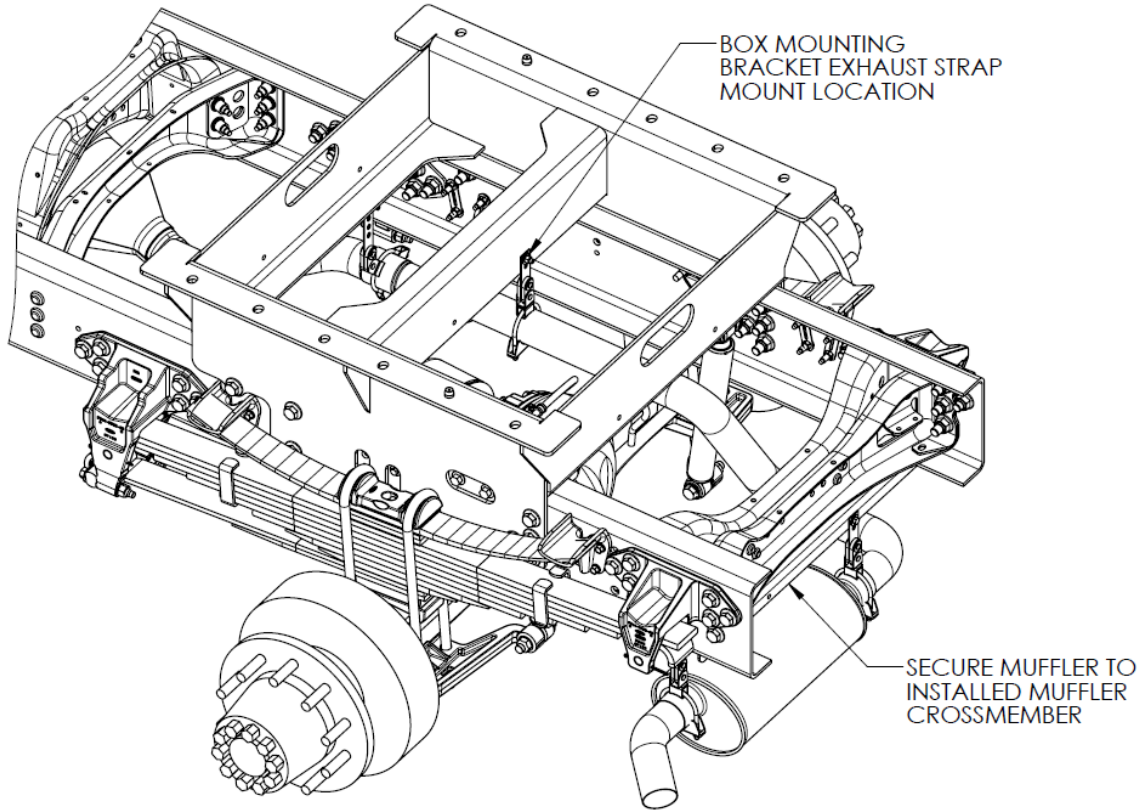
6.3 MODIFIED CHASSIS (continued)



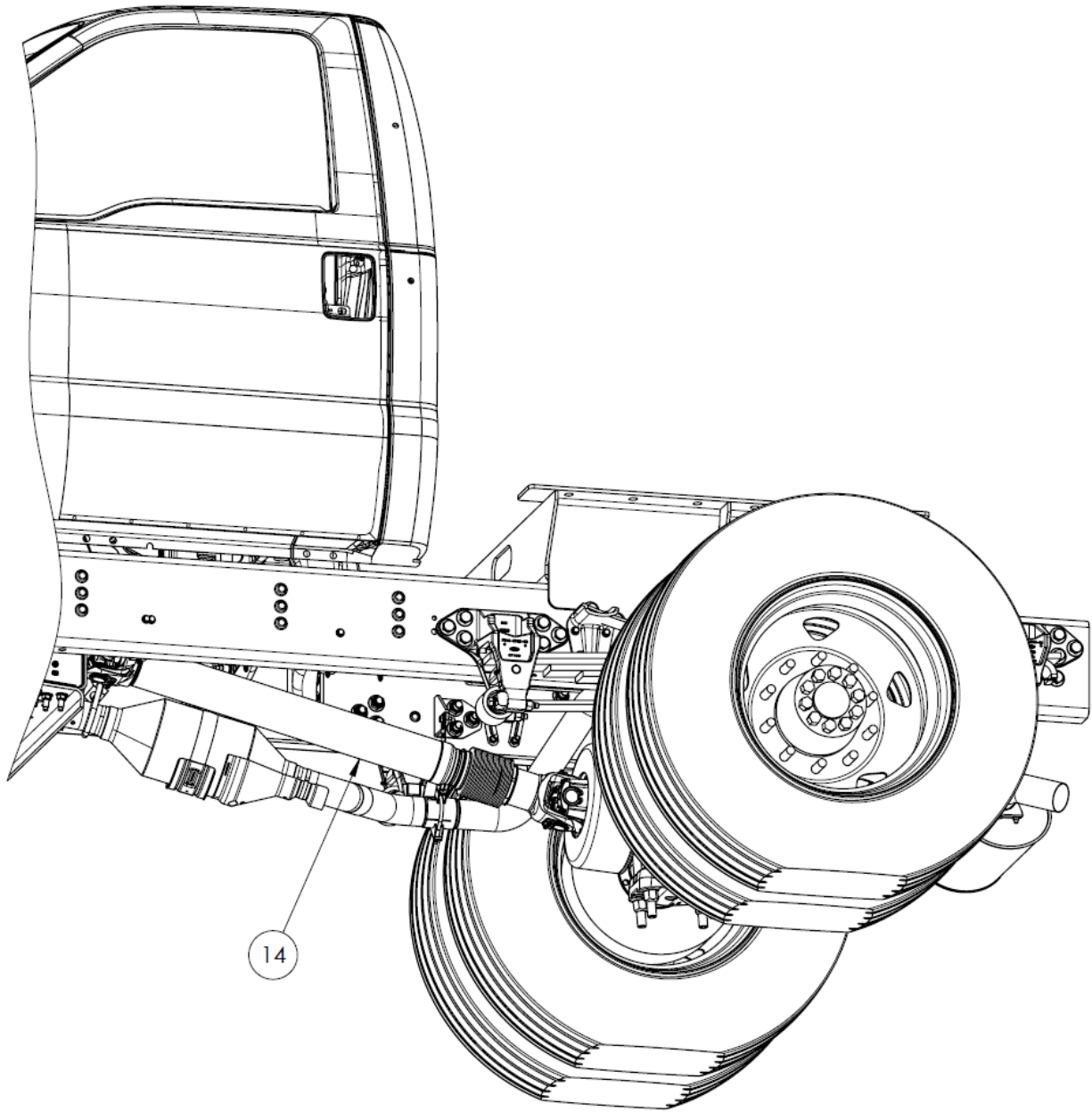
6.3 MODIFIED CHASSIS (continued)



6.3 MODIFIED CHASSIS (continued)



6.3 MODIFIED CHASSIS (continued)





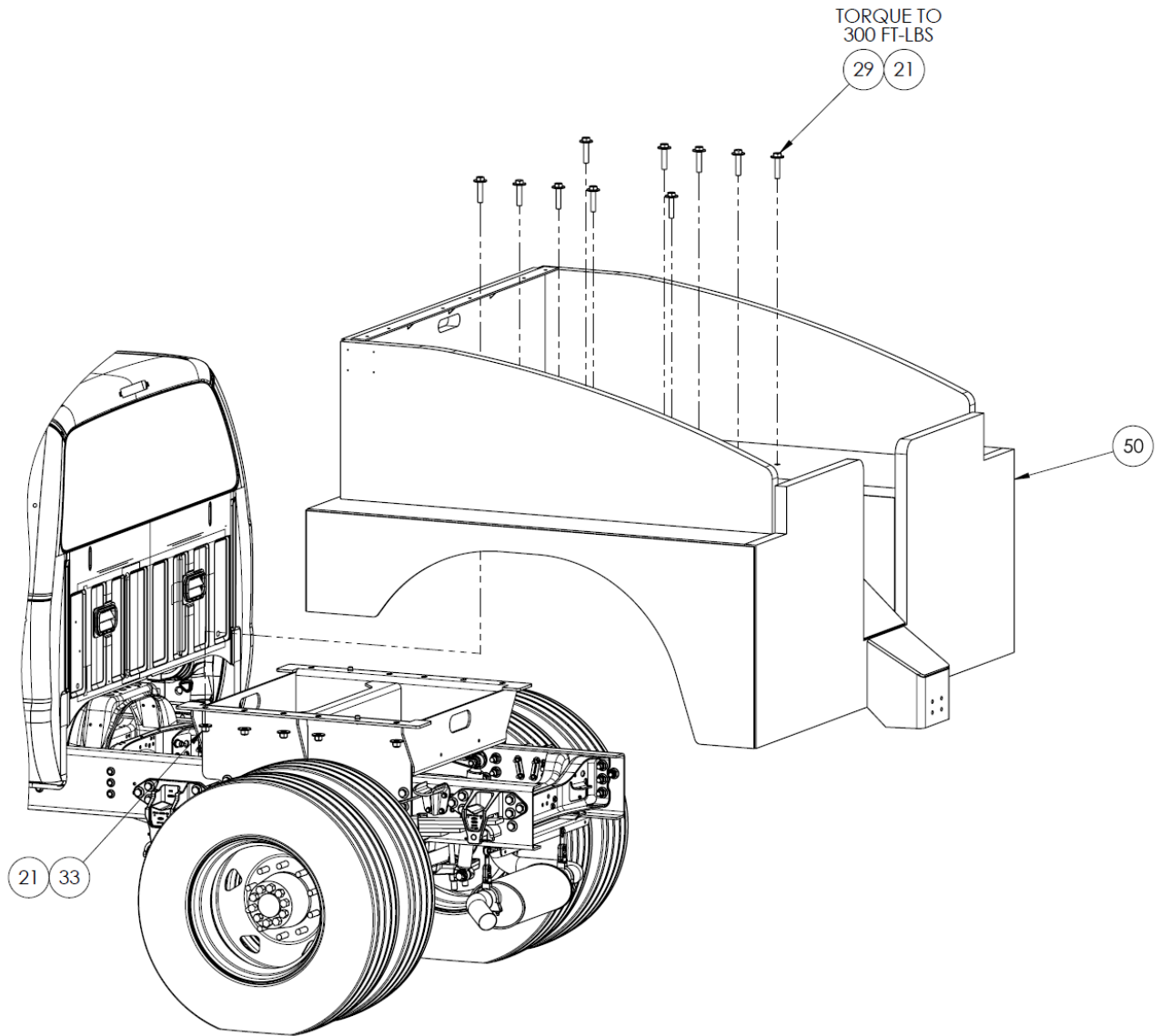
6.3 MODIFIED CHASSIS (continued)

**Parts List**

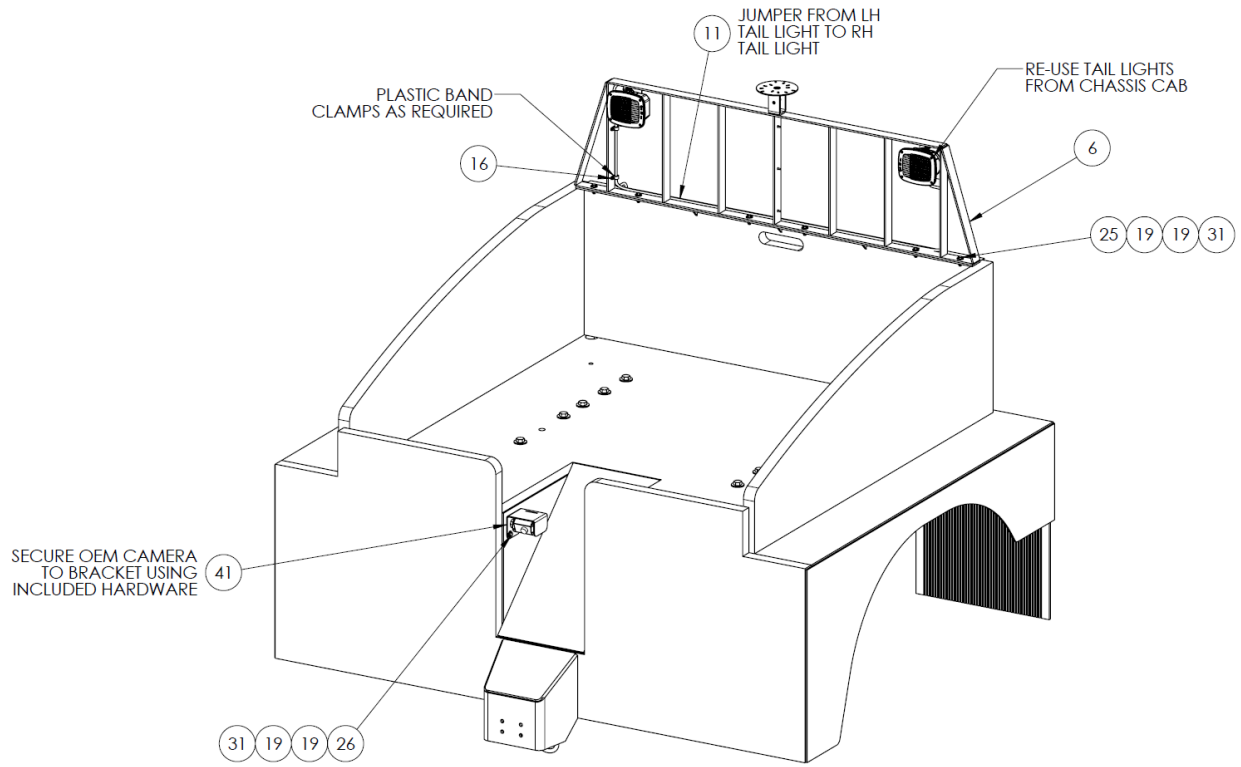
When ordering replacement parts/kits, please specify model, serial number and color of your unit.

Item	Part Number	Description	Qty
1	A-TT4-00260	PIPE HANGAR 360 SWIVEL CL END	4
2	EB07-07-003-SA	MUFFLER, EB2	1
3	EB2 EX CLAMP	3" HEAVY DUTY EXHAUST CLAMP	4
4	G-1250-1070W	FLATWASHER, 3/8 WIDE	22
5	G-1420-107012	BOLT, 3/8-16 X 1.25" HEX HD GR 8	5
6	G-1420-107014	BOLT, 3/8-16 X 1.5" HEX HD GR 8	2
7	G-1420-107016	BOLT, 3/8-16 X 1.75" HEX HD GR 8	4
8	G-1727-1070	NUT, 3/8-16 TOP LOCK ZINC	11
9	G-1889-200060	FHCS, M20X2.5X60, GR 10.9	28
10	G-1889-200075	FHCS, M20X2.5X75, GR 10.9	14
11	G-1890-200	FLANGE NUT, M20X2.5	42
12	H-5210	BRAKE LINE, LH	1
13	H-5211	BRAKE LINE, RH	1
14	H-5212	DRIVESHAFT, F650	1
15	H-5219	PARKING BRAKE CABLE EXTENSION	1
16	J-8725-00	BRACKET, PARKING BRAKE CBL (P)	1
17	J-8730-00	BRACKET, PARKING BRAKE CBL (P)	1
18	J-8734-00	BRACKET, EXHAUST (P)	1
19	J-8735-00	CROSSMEMBER, EXHAUST	1
20	J-8736-00	PLATE, CLAMP	2
21	J-8752-00	BRACKET, BRAKE SUPPORT	1
22	TR-2819	EXHAUST PIPE	1
23	TR-2834	EXHAUST PIPE	1
24	Z-12300-00	WLD, BOX MTG BRKT (P)	1

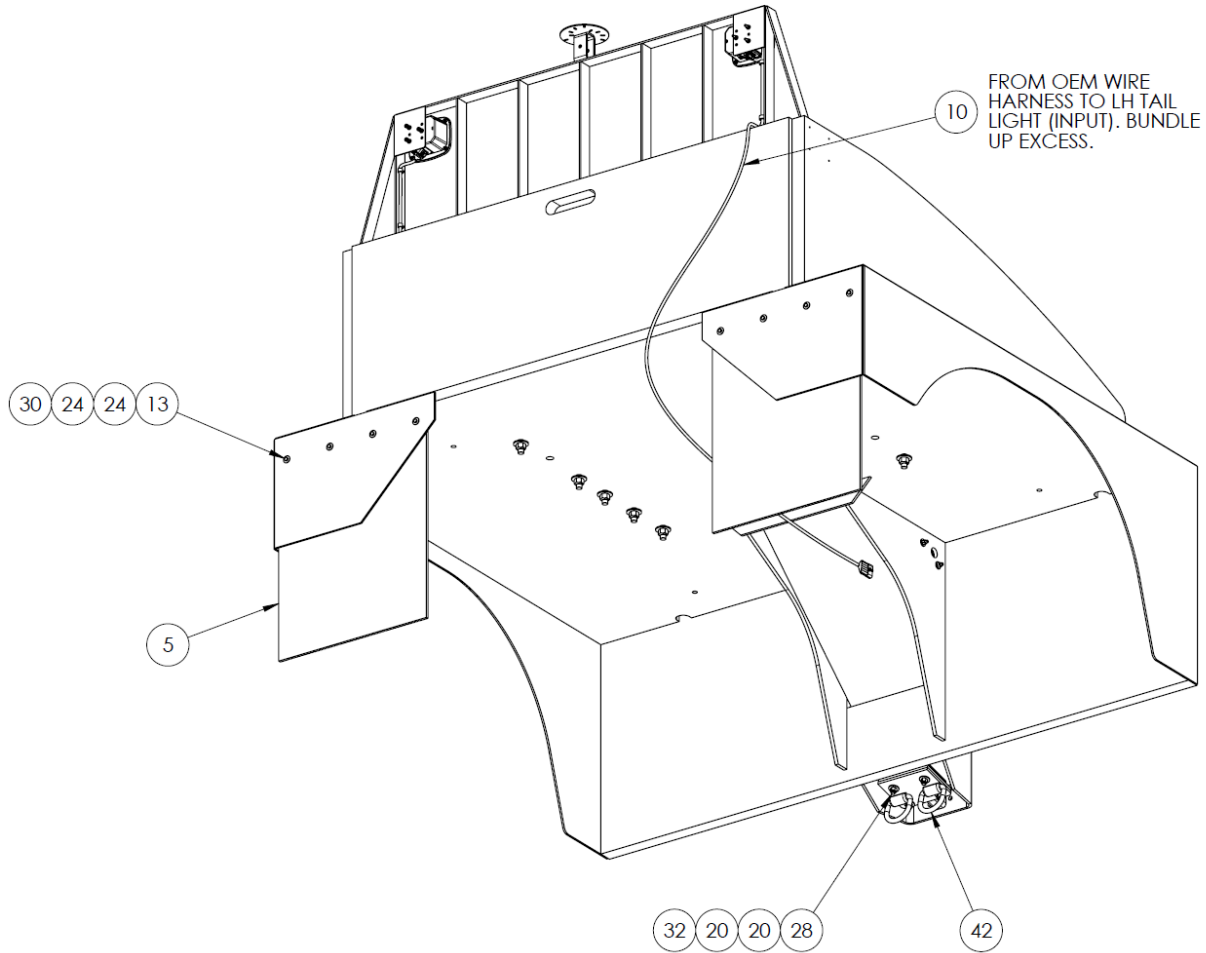
6.4 REMAINING PARTS



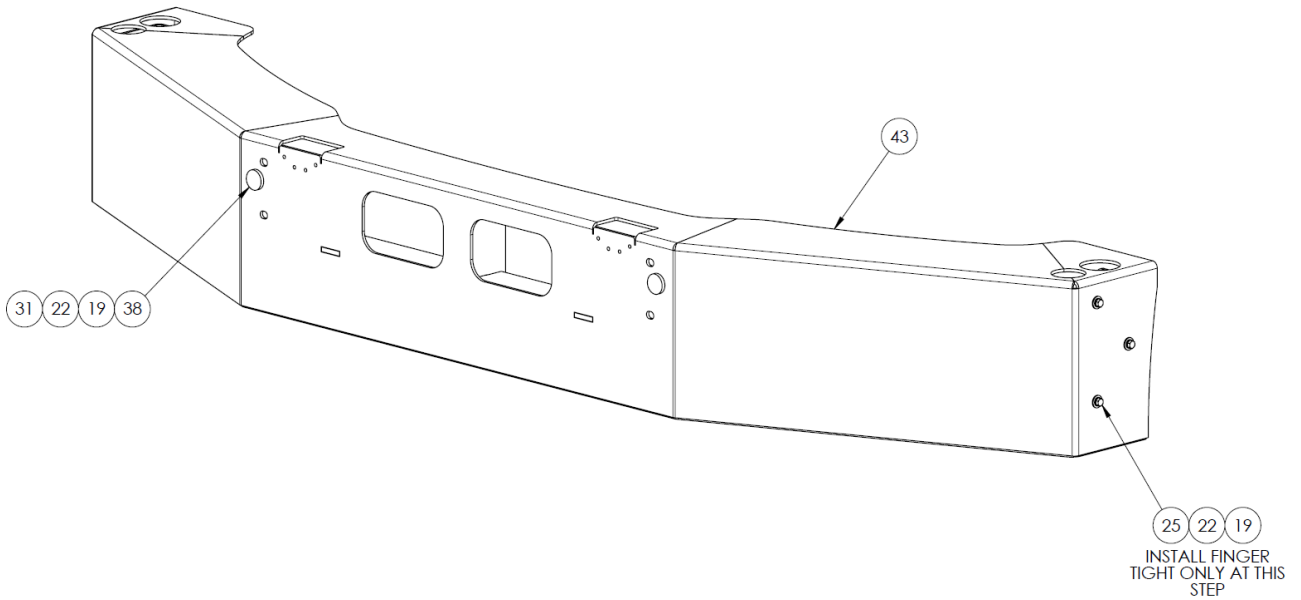
6.4 REMAINING PARTS (continued)



6.4 REMAINING PARTS (continued)

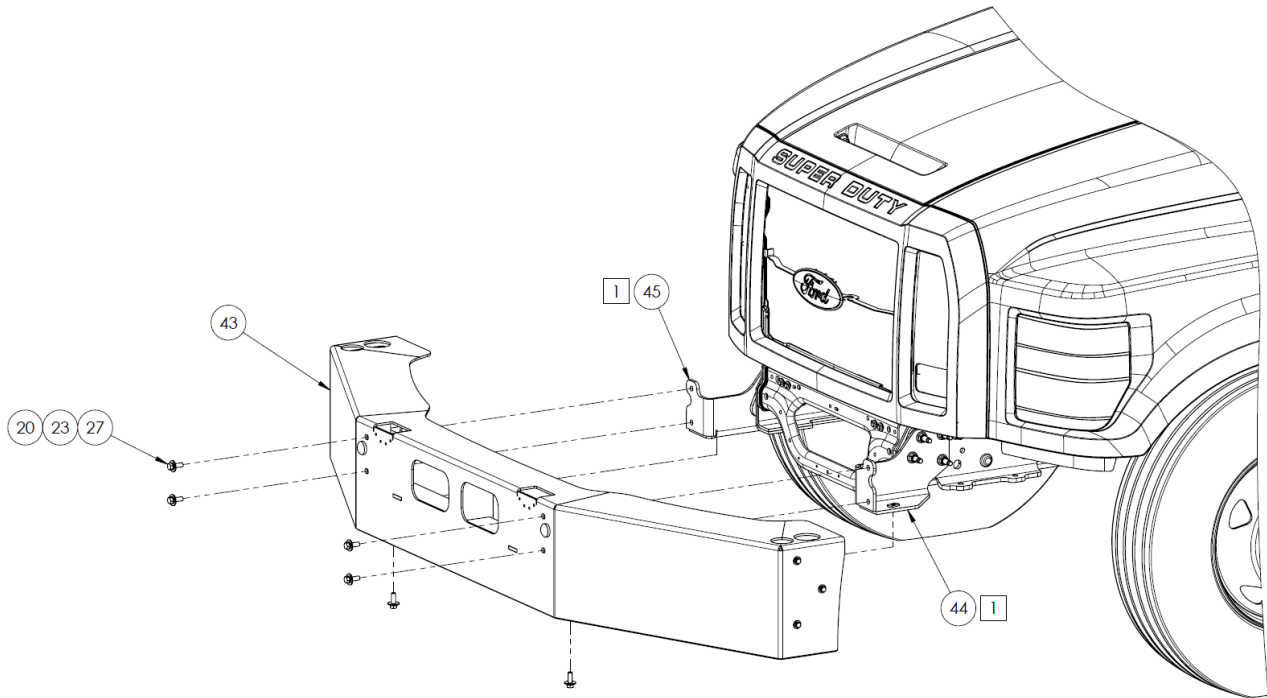
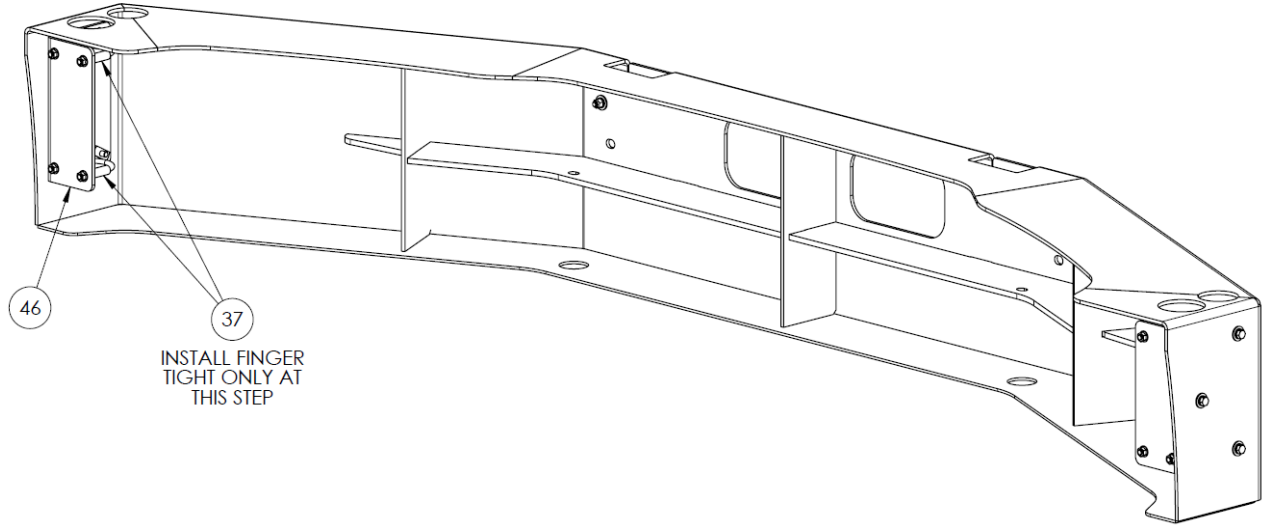


10 FROM OEM WIRE HARNESS TO LH TAIL LIGHT (INPUT). BUNDLE UP EXCESS.

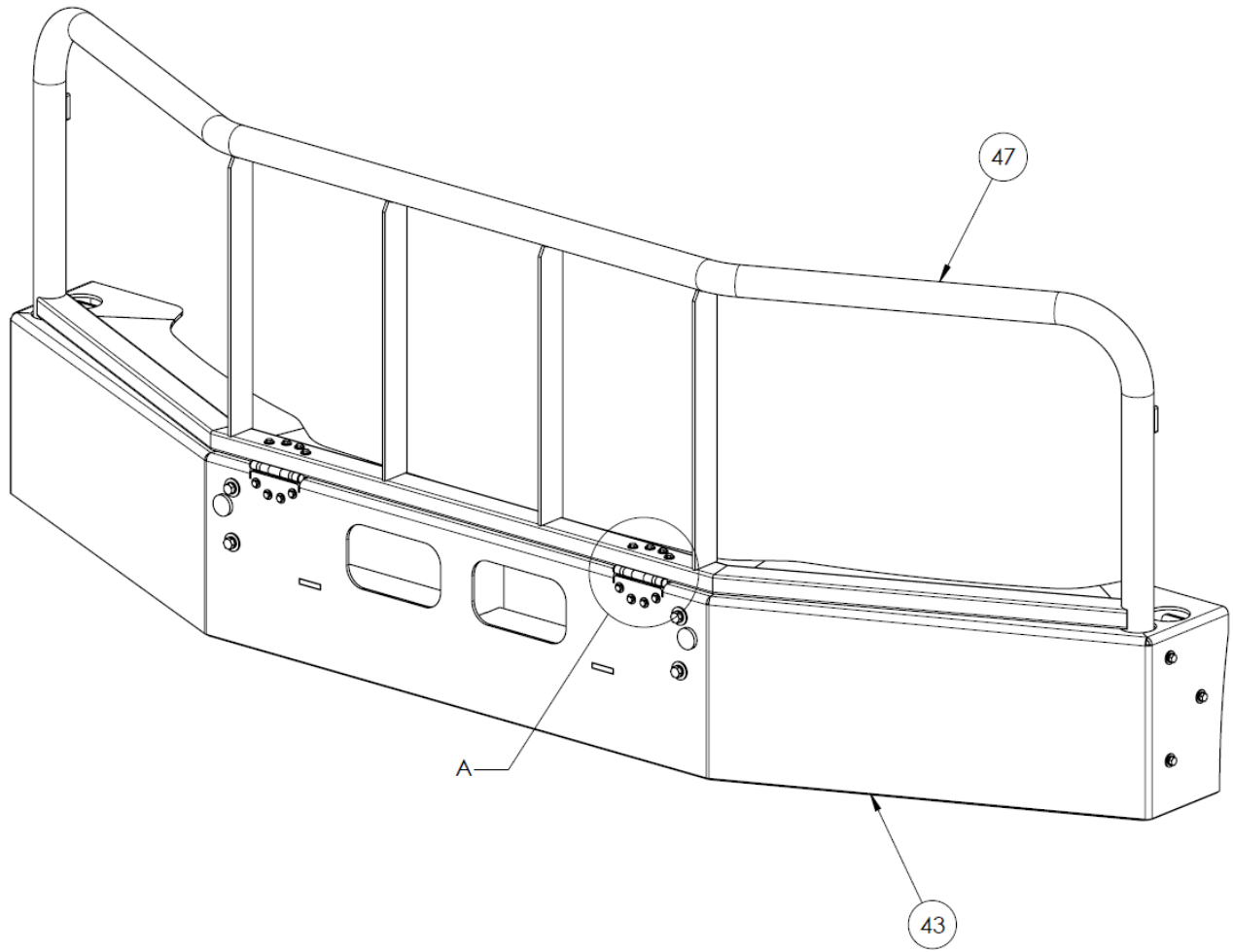


25 22 19  
 INSTALL FINGER TIGHT ONLY AT THIS STEP

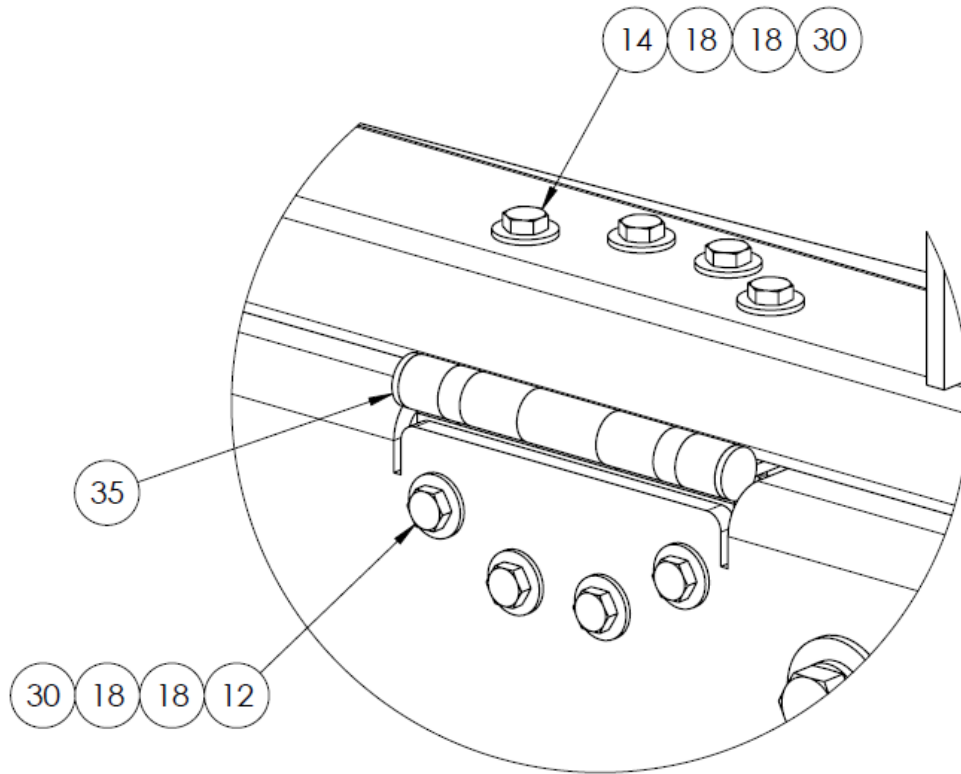
6.4 REMAINING PARTS (continued)



6.4 REMAINING PARTS (continued)

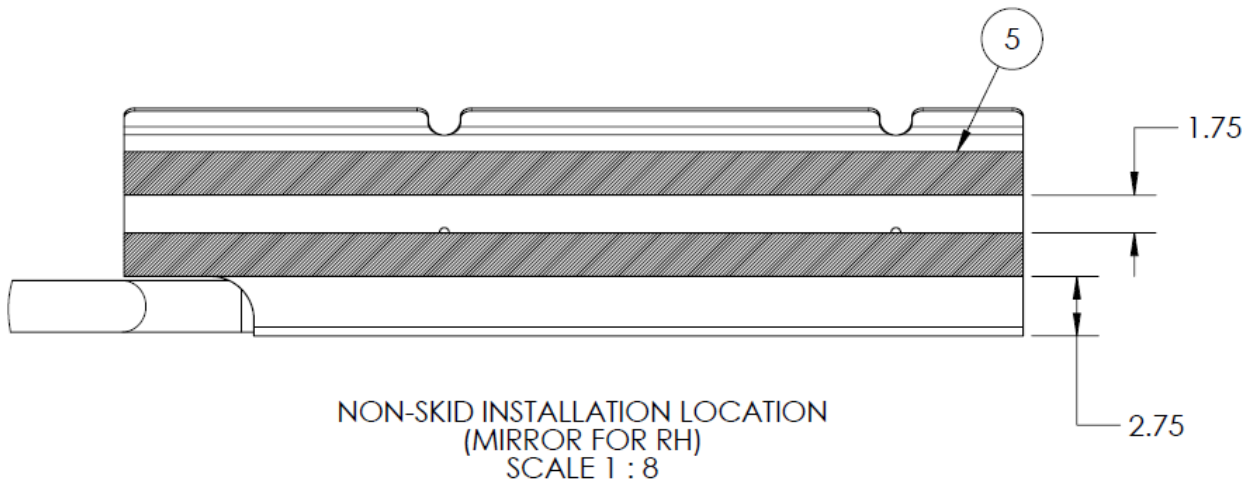
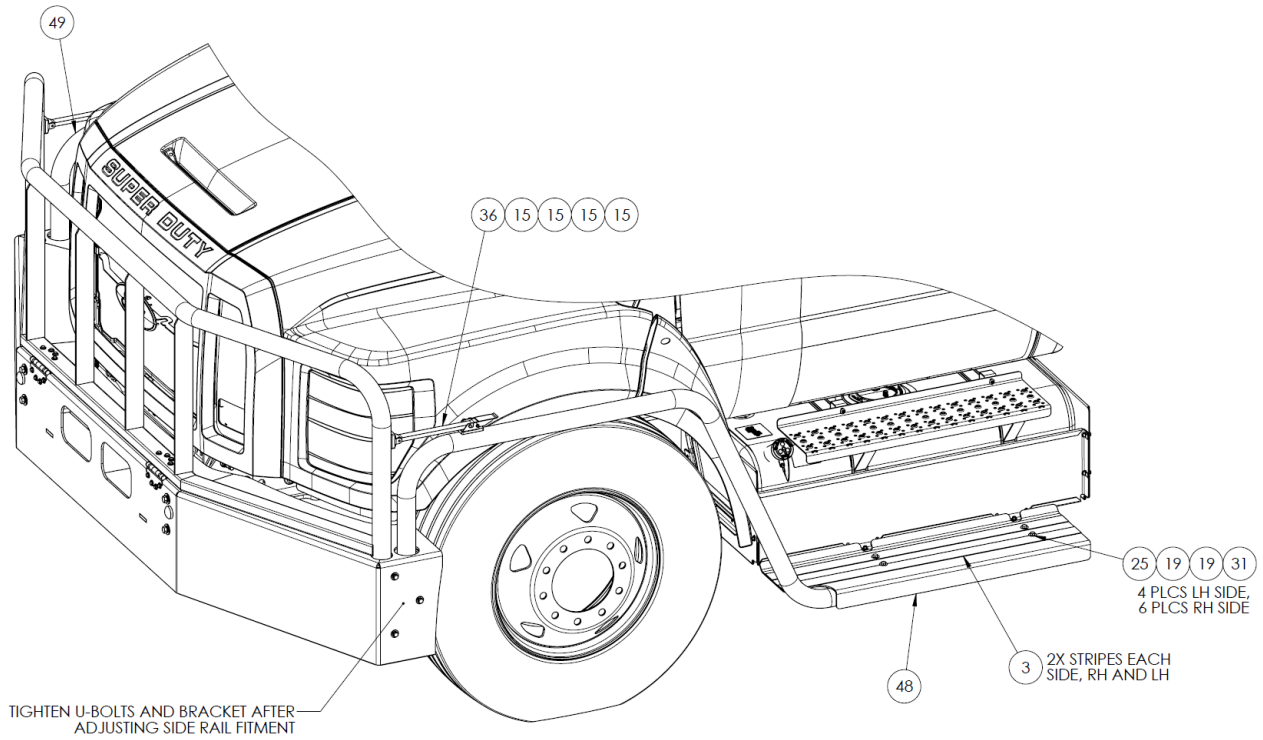


6.4 REMAINING PARTS (continued)

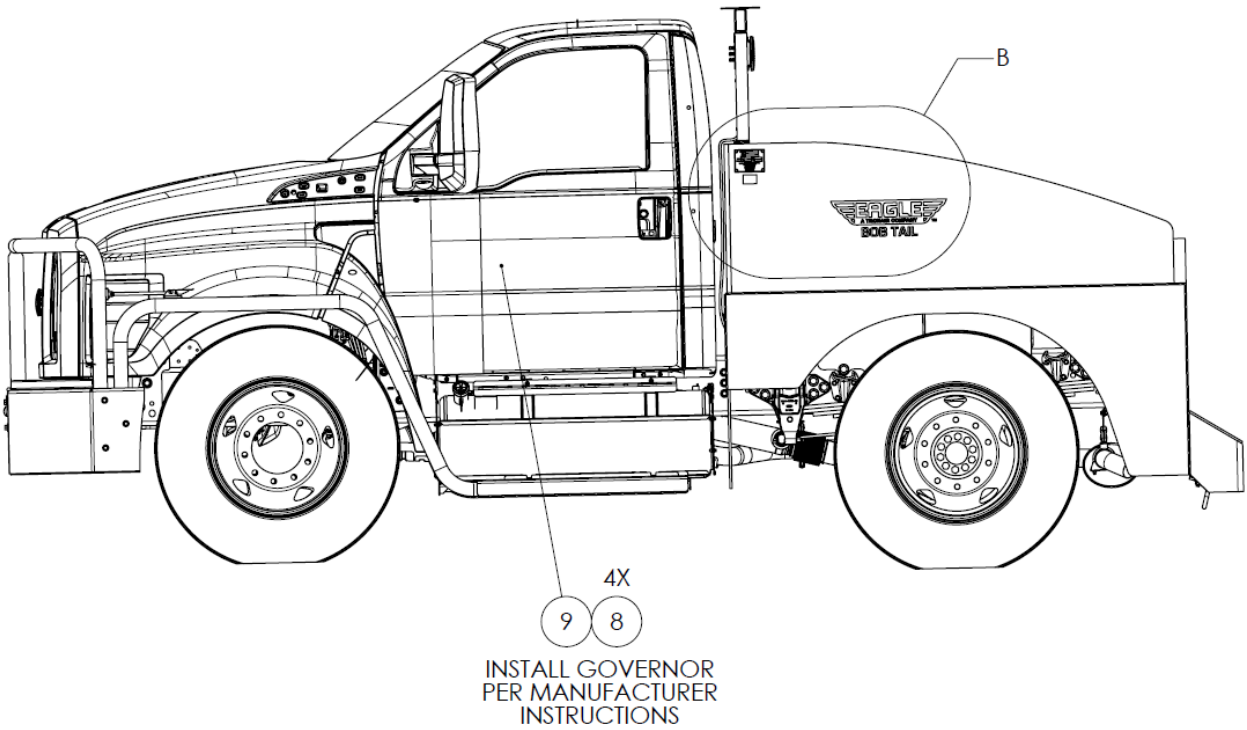


DETAIL A  
SCALE 1 : 2  
2 PLACES

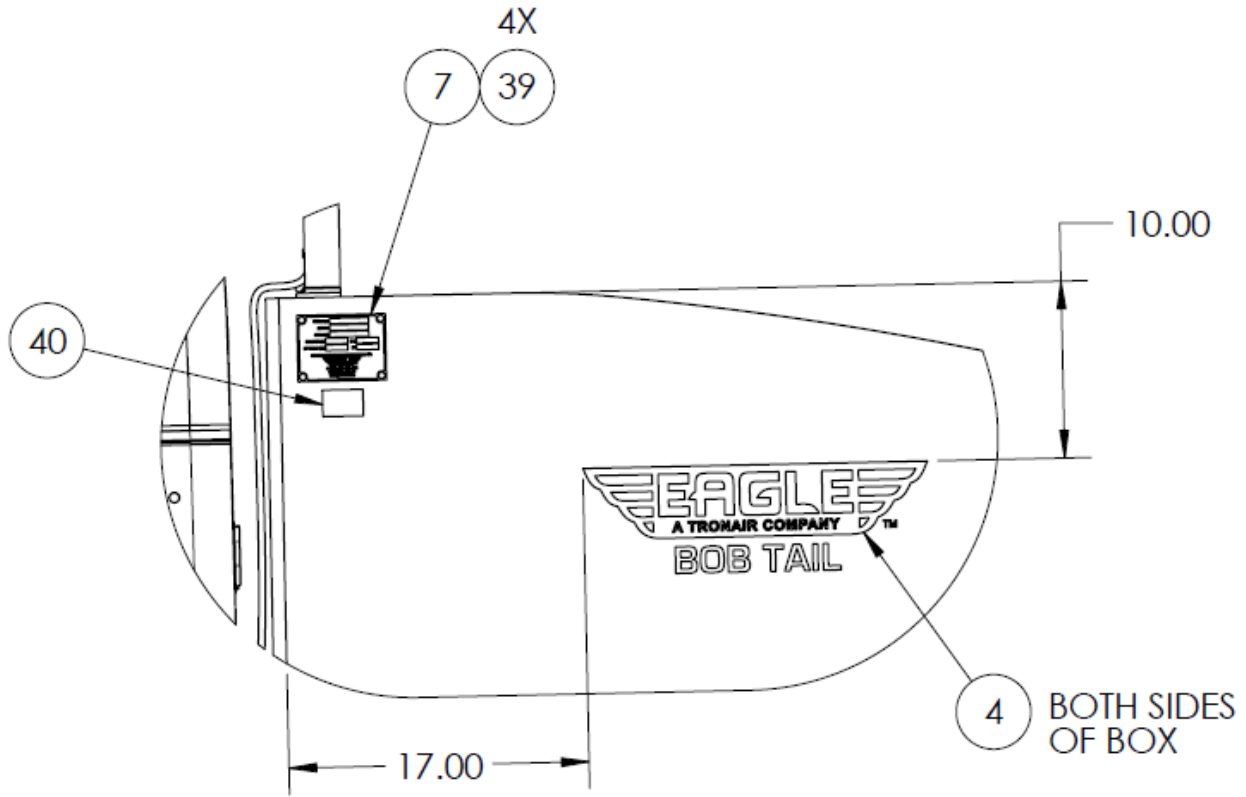
6.4 REMAINING PARTS (continued)



6.4 REMAINING PARTS (continued)



6.4 REMAINING PARTS (continued)



DETAIL B



6.4 REMAINING PARTS (continued)

**Parts List**

When ordering replacement parts/kits, please specify model, serial number and color of your unit.

Item	Part Number	Description	Qty
1	12010300	CAVITY SEAL, APTIV METRIPACK 280	5
2	12084891	CONNECTOR HOUSING, APTIV	1
3	A-EB2-00451	ANTI-SLIP TAPE, 2" WIDE	168
4	A-TT4-00500	BOB TAIL DECAL	2
5	AE-OPT-0162	MUD FLAP, EB2	2
6	EB00-02-004-SA	WLD, HEADACHE RACK (WP)	1
7	EB00-14-002-SA	PLACARD	1
8	EB00-24-001-CA	TAMPER RESISTANT SCREW, #4	4
9	EC-3554	GOVERNOR, SPEED LIMITER	1
10	EC-3641	HARNESS, TAIL LIGHT EXTENSION	1
11	EC-3642	HARNESS, TAIL LIGHT JUMPER	1
12	G-1100-105010	BOLT, 1/4-20 X 1.0" LG HEX HD GR 5	8
13	G-1100-105012	BOLT, 1/4-20 X 1-1/4" LG HEX HD GR 5	8
14	G-1100-105022	BOLT, 1/4-20 X 2-1/4" LG HEX HD GR 5	8
15	G-1150-103504	SCREW, #10-32 X 1/2" LG HEX HD MACHINE	8
16	G-1202-1035	STOPNUT, #10-32 ELASTIC	4
17	G-1202-1050	STOPNUT, 1/4-20 ELASTIC	3
18	G-1250-1050W	FLATWASHER, 1/4 WIDE	32
19	G-1250-1070W	FLATWASHER, 3/8 WIDE	44
20	G-1250-1090W	FLATWASHER, 1/2 WIDE	14
21	G-1250-1110W	FLATWASHER, 3/4 WIDE	20
22	G-1251-1070R	LOCKWASHER, 3/8 REGULAR	8
23	G-1251-1090R	LOCKWASHER, 1/2 REGULAR	6
24	G-1254-08	WASHER, FENDER	16
25	G-1420-107012	BOLT, 3/8-16 X 1.25" HEX HD GR 8	22
26	G-1420-107014	BOLT, 3/8-16 X 1.5" HEX HD GR 8	2
27	G-1420-109014	BOLT, 1/2-13 X 1-1/2" HEX HD GR 8	6
28	G-1420-109016	BOLT, 1/2-13 X 1-3/4" HEX HD GR 8	4
29	G-1420-111034	BOLT, 3/4-10 X 3-1/2" HEX HD GR 8	10
30	G-1727-1050	NUT, 1/4-20 TOP LOCK ZINC	24
31	G-1727-1070	NUT, 3/8-16 TOP LOCK ZINC	20
32	G-1727-1090	NUT, 1/2-13 TOP LOCK ZINC	4
33	G-1727-1110	NUT, 3/4-10 TOP LOCK ZINC	10
34	H-4725	CARABINER, EAGLE KEYCHAIN	1
35	H-5034	HINGE	2
36	H-5205	DRAW LATCH	2
37	H-5206	CLAMP, 2 3/8 HD U-BOLT	4
38	H-5208	THREADED BUMPER	2
39	MS21318-52	DRIVE SCREW, NO. 12 X 1/2" LG	4



Model: EB2-10G  
Serial Numbers: 10B030 and later  
Bobtail Tractor

6.4 REMAINING PARTS (continued)

**Parts List**

When ordering replacement parts/kits, please specify model, serial number and color of your unit.

Item	Part Number	Description	Qty
40	V-1001	LABEL, MADE IN USA	1
41	Z-11727-00	WELDMENT, CAMERA BRACKET (WP)	1
42	Z-11733-00	WLD, EB2 TIE-DOWN (P)	1
43	Z-12276-00	WLD, FRONT BUMPER (WP)	1
44	Z-12278-00	BRACKET, BUMPER LH (P)	1
45	Z-12279-00	BRACKET, BUMPER RH (P)	1
46	Z-12280-00	BRACKET, TUBE MOUNT LH (P)	2
47	Z-12282-00	GRILLE GUARD (WP)	1
48	Z-12283-00	WLD, SIDE STEP, LH (WP)	1
49	Z-12284-00	WLD, SIDE STEP, RH (WP)	1
50	Z-12299-00	WLD, EB2-10G BOX	1



**7.0 PROVISION OF SPARES**

**7.1 SOURCE OF SPARE PARTS**

Spare parts may be obtained from the manufacturer:

**Tronair / Eagle Tugs**

1 Air Cargo Pkwy East  
Swanton, Ohio 43558 USA

Telephone: (419) 866-6301 or 800-426-6301

Fax: 419) 867-0634

E-mail: sales@tronair.com

Website: www.tronair.com



For Spare Parts, Operations & Service Manuals or Service Needs:  
Scan the QR code or visit [Tronair.com/aftermarket](http://Tronair.com/aftermarket)

**8.0 IN SERVICE SUPPORT**

Contact Tronair/Eagle Tugs. for technical services and information.

**8.1 TECHNICAL ASSISTANCE**

When addressing a repair procedure or operational problem, please remember that Tronair technical support is only a phone call away. Tronair technicians are available to assist you in vehicle diagnostics and recommended repair procedures. We encourage you to use this service to reduce machine down-time and to gain a better understanding of proper repair procedures.

**9.0 GUARANTEES/LIMITATION OF LIABILITY**

**9.1 FORD WARRANTY**

The Eagle EB2 series truck is built on a Ford Motor Company Chassis Cab. All unmodified or altered Ford components are covered by the Ford Motor Company standard warranty. Please refer to the vehicle manual supplied with your EB2 tractor for specific warranty details.

Eagle Bob Tails are covered under Ford Motor Company's Standard Warranty for each respective Ford truck model.



## 9.2 EAGLE WARRANTY

### **Coverage Overview**

The Eagle Warranty covers all new Eagle vehicles. Eagle, a Tronair company, warrants that these vehicles will be free from defects in material and workmanship for the period described based on the warranty period of the vehicles listed below. The warranty period begins on the date of shipment to the original purchaser. Coverage extends for the time period or operating hours specified for each vehicle series below, whichever limit is reached first. This warranty is non-transferable and applies only to the original purchaser of the vehicle.

### **Coverage by Vehicle Series**

The Eagle Warranty provides 3-year or 3,000-hour coverage, whichever occurs first, for TT-series, TTR-series, eTT-series, eJP-series, XM-series, XL-series, and USATS vehicles when used in aviation applications. For non-aviation/industrial applications, the Eagle Warranty provides 1-year or 2,000-hour coverage, whichever occurs first, regardless of vehicle series. This includes MTT-series, STT-series, RTT-series, Bobtails, Transit Pro, and any aviation-series vehicle used in non-aviation/industrial applications. Bobtails are covered under Ford Motor Company's standard warranty (three-year/36,000-mile bumper-to-bumper and five-year/60,000-mile powertrain). Eagle provides supplementary 1-year/2,000-hour warranty coverage for Eagle-specific components not covered by Ford's warranty.

### **Exclusions**

This warranty does not apply to any Eagle vehicle or component part(s) that have damage caused by: misuse of the vehicle, accidents, collision or objects striking the vehicle, vandalism, fire, explosion or water damage, using contaminated or improper fuel/fluids, customer-applied chemicals to painted surfaces, improper handling or application, or maintenance neglect including lack of lubricants or fluids. This warranty does not extend to Eagle vehicles and/or parts which have been repaired or altered outside of Eagle's plant or the facility of an Authorized Service Representative without the permission of Eagle.

Any modification to the electrical system must receive prior written approval from Eagle. Unauthorized electrical modifications will void warranty coverage for electrical components only.

This warranty does not apply to routine maintenance or wearable parts of the Eagle vehicle such as: tires, brake pads or shoes, ball joints, kingpins, u-joints, wheel bearings, filters, seals, spark plugs, hoses, belts, light bulbs, batteries (diesel and gas vehicles), fuses, or similar items.

Batteries, battery chargers, snowplows, and Transit Pro options are warranted directly to the user by their respective manufacturers and not by Eagle or an Authorized Service Representative.

This warranty does not cover or provide credit for the following: vehicle rental or other substitute equipment; lodging; loss of time, income, sales or profits; loss of the use of vehicle; telephone calls or communication expense; lift truck; storage fees; injury or death to persons or damage or destruction of property; or consequential, incidental or punitive damages.

### **Warranty Claim Procedure**

When a warranty situation arises, it is essential that the customer contact Tronair Product Support at [productsupport@tronair.com](mailto:productsupport@tronair.com) or +1 (419) 861-2560. The customer will need to provide Eagle with the vehicle serial number and operating hours. A representative will analyze the problem and determine the next steps. In many cases, technical support personnel will be able to analyze the problem and recommend a solution that will solve the problem and reduce downtime. If further service is required, a customer service representative will work with customer personnel to arrange a service provider and/or will send parts to your facility for the repair as quickly as possible. The determination of a warrantable claim will be at the sole discretion of Tronair.

### **Notice and Remedies**

Notice of any claimed defect must be given to Eagle within the warranty period and within a reasonable time after such defect is discovered, not to exceed thirty (30) days. Liability under this warranty is limited to either replacing or repairing, at Eagle's election, any part or parts deemed defective after examination by Eagle or an Authorized Service Representative. Eagle reserves the right to use remanufactured parts as replacements in warranty claims.



9.2 EAGLE WARRANTY *(continued)*

**Third-Party Inspection and Return Requirements**

At Eagle's election, any part replaced under warranty as defective can be sent out for third-party inspection. If the part is not found to be defective, or abuse was the cause of the failure, all associated costs related to the warranty claim may be charged to the customer. All parts returned to Eagle by a customer must be received without further damage. If returned items are not properly packaged for return shipping to Eagle or an Authorized Service Representative via prepaid transportation, the customer will be charged for the full value of the item that was damaged upon return. This warranty does not extend beyond its original term for any Eagle vehicle or part replaced or repaired under warranty. Any and all disputes or disagreements will be negotiated in good faith by both parties.

**Labor Allowance**

A labor allowance may be issued upon request at Tronair's discretion. Allowable labor hours and per-hour labor rate will be determined by Eagle according to reasonable automotive standards.

**Limitation of Warranties**

Except as set forth above, all warranties, conditions, representations, indemnities and guarantees, express or implied, whether arising by statute, custom of trade, or under oral or written statements made by or on behalf of Eagle in negotiations with customer, distributor, dealer, or any representative, are hereby waived and excluded, and no liability shall attach to Eagle, either in contract or in tort, or strict liability in tort, for any damage to property, loss of profits, damages, costs, charges, liability or expenses, whether direct or indirect, consequential or otherwise, which arise out of or in connection with the sale or use of any Eagle vehicle or the supply of services.

**Definitions**

Authorized Service Representative: Service providers approved by Eagle to perform warranty repairs. Contact Tronair Product Support for a list of Authorized Service Representatives in your area.

*Eagle reserves the right to modify this warranty without prior notice.*